

Butterflies of the Limestone Coast

MOSTLY BROWN OR ORANGE
 Medium sized (2.5cm - 6cm) or Small sized (<2.5cm)

UPPER SIDE	UNDER SIDE	UPPER SIDE	UNDER SIDE	UPPER SIDE	UNDER SIDE	UPPER SIDE	UNDER SIDE
<p>Striped Xenica <i>Oreixenica kershawi</i></p>		<p>Lesser Wanderer <i>Danaus petilia</i></p>		<p>Australian Painted Lady <i>Vanessa kershawi</i></p>		<p><i>female</i></p> <p>Barred Grass-skipper <i>Dispar compacta</i></p>	
<p><i>female</i></p> <p>Bright Shield-skipper <i>Signeta flammeata</i></p>		<p>Splendid Ochre <i>Trapezites symmopus</i></p>		<p>Marbled Xenica <i>Geitoneura klugii</i></p>		<p><i>male</i></p> <p>Mottled Grass-skipper <i>Anistynta cynone</i></p>	
<p>Varied Sedge-skipper <i>Hesperilla donnysa</i></p>		<p>Yellow Admiral <i>Vanessa itea</i></p>		<p>Meadow Argus <i>Juvonia villida calybe</i></p>		<p>White-banded Grass-dart <i>Taractrocera papyria papyria</i></p>	
<p>Golden-haired Sedge-skipper <i>Hesperilla chrysostricha cyclospila</i></p>		<p>Shouldered Brown <i>Heteronympha penelope</i></p>		<p>Flame Sedge-skipper <i>Hesperilla idothea clara</i></p>		<p>Southern Grass-dart <i>Ocybadistes walkeri hypochlorus</i></p>	
<p>Large Brown Skipper <i>Motasingha trimaculata trimaculata</i></p>		<p>Orange Ochre <i>Trapezites eliena</i></p>		<p>Grassland Copper <i>Lucia limbaria</i></p>			

(c) NRM Education 2013

WHITE or CREAM with BLACK or BROWN
 Medium sized (2.5cm - 6cm) or Large sized (>6cm)

UPPER SIDE

UNDER SIDE



Spotted Jezabel
Delias aganippe



Caper White
Belenois java teutonia

UPPER SIDE

UNDER SIDE



Cabbage White (I)
Pieris rapae



pale form

dark form

White Migrant
Catopsilia pyranthe crokera

MOSTLY YELLOW
 Medium sized (2.5cm - 6cm)

UPPER SIDE

UNDER SIDE

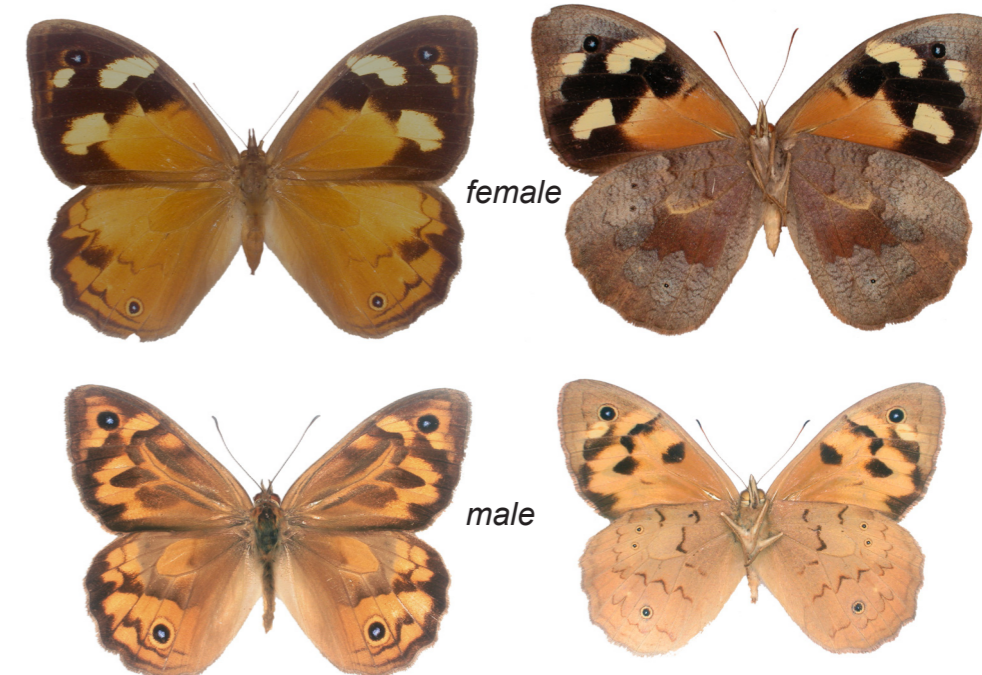


Small Grass Yellow
Eurema smilax

MOSTLY BROWN OR ORANGE
 Large sized (>6cm)

UPPER SIDE

UNDER SIDE



female

male

Common Brown
Heteronympha merope merope

UPPER SIDE

UNDER SIDE



Chequered Swallowtail
Papilio demoleus sthenelus



Wanderer (I)
Danaus plexippus plexippus

MOSTLY BLUE

Small sized (<2.5cm) or Medium sized (2.5cm - 6cm)

UPPER SIDE

UNDER SIDE



female



male

Large Brown Azure
Ogyris idmo



female

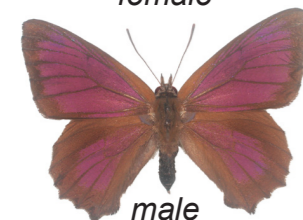


male

Dark Purple Azure
Ogyris abrota



female



male

Small Bronze Azure
Ogyris otaes

UPPER SIDE

UNDER SIDE



Blotched Dusky-blue
Candalides acastus



Two-spotted Line-blue
Nacaduba biocellata biocellata



Bitter-bush Blue
Theclinesstes albocincta



Saltbush Blue
Theclinesstes serpentata serpentata



Common Grass-blue
Zizina labradus labradus



male

Satin Azure
Ogyris amaryllis meridionalis



Broad-margined Azure
Ogyris olane



Long-tailed Pea-blue
Lampides boeticus



USING THIS KEY

This key will assist you in identifying butterflies likely to visit your garden or native reserve in the South East Region.

The key is based on colour and size and, where possible, two views of each butterfly are shown; the upper side and the under side.

The four colour groups represent the upper side wing colours - mostly yellow or white; mostly orange or brown; mostly white or cream with black or brown; and mostly blue.

The sizes, small (<2.5cm), medium (2.5cm - 6cm), and large (>6cm) represent open wingspan and are shown at approximate life size when printed A3.

Note the photographs presented here show the wings fully open and when butterflies are at rest they may hold their wings in such a way that you only see the under side. This is especially so for the skippers, darts and blue butterflies, some of which never open their wings when at rest.

Butterflies named in **red** with an **(I)** naturally migrated or have been introduced into the region.

ACKNOWLEDGEMENTS

This key was adapted from the Butterfly Identification charts produced by the Butterfly Conservation Society SA Inc. and South Australian Museum.

Photography by Roger Grund and Trevor Rowe from pinned specimens in the South Australian Museum (copyright Butterfly Conservation Society SA Inc.).

NRM Education also appreciates the invaluable assistance provided by Jan Forrest OAM in the production of this resource and Bryan Haywood for providing information on South East S.A. species of butterflies.



FURTHER INFORMATION

For scientific names and information on these butterflies, their food plants and how to attract them to your garden, please see the book 'Attracting butterflies to your garden: what to grow and conserve in the Adelaide region' by Lindsay Hunt, Roger Grund, David Keane and Jan Forrest (2007) published by the Butterfly Conservation Society South Australia Inc. and available from the South Australian Museum book shop, Butterfly Conservation SA Inc., and other retail outlets.

Other guides include:

A field guide to the Butterfly Walk in Penambol Conservation Park <https://www.yumpu.com/en/document/read/8973184/butterfly-walk-field-guide-forestrysa>

Braby, M.F. (2004) The complete field guide to butterflies of Australia. Australian National University.

Additionally, discover which butterfly-friendly plants are found in your area and the butterflies that are associated with them <https://butterflyconservationsa.net.au/butterflies/attract/>

Limestone Coast Landscape Board 08 8429 7550 www.landscape.sa.gov.au/lc